

B-Raf (V600E)

Catalog Number: 26039

Gene Symbol: BRAF, BRAF1, RAFB1

Description: Anti-B-Raf (V600E) Mouse Monoclonal Antibody

Background: B-Raf is a member of the Raf family of Ser/Thr protein kinases. It functions downstream of Ras to regulate the MAP kinase signaling pathway. Mutations in the BRAF gene cause diseases. Inherited mutations in BRAF cause cardiofaciocutaneous syndrome. Acquired mutations in BRAF have been found in cancers.

Immunogen: A synthetic peptide from the internal region of Braf(V600E), human origin.

Tested Applications: ELISA, WB, IF, IHC

Recommended Dilutions:

ELISA:	1:1000-1:5000
WB:	1:500-1:1000
IF:	1:50-1:100
IHC:	1:25-1:100

Concentration: 1 mg/ml

Host: Mouse

Clonality: Monoclonal

Isotype: IgG

Purity: Purified from ascites

Format: Liquid

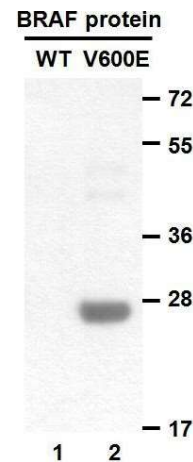
Preservative: No

Constituents: PBS (without Mg²⁺ and Ca²⁺), pH7.4, 150 mM NaCl, 50% glycerol

Species Reactivity: Recognizes V600E mutated, but not wild type B-Raf proteins from vertebrates.

Storage Conditions: Store at -20°C. Avoid freeze / thaw cycles.

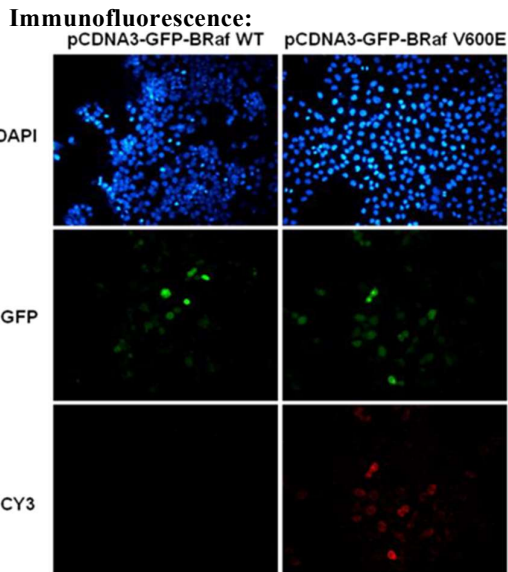
Western blot:



Western blot analysis of recombinant B-Raf proteins.

Purified His-tagged B-Raf(V600E) protein (amino acids 513-693, lane 2) and corresponding wild type protein (lane 1) were blotted with anti-B-Raf(V600E) monoclonal antibody (Cat. # 26039).

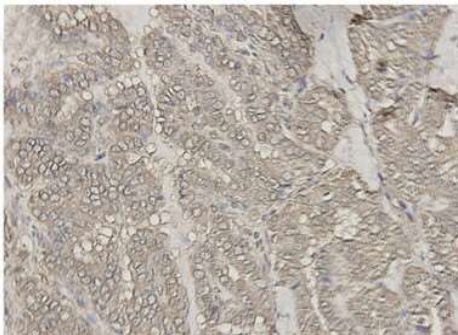
FOR RESEARCH USE ONLY. NOT FOR DIAGNOSTIC APPLICATIONS



Immunofluorescence of cells expressing B-Raf (V600E) protein with anti-B-Raf (V600E) antibody.

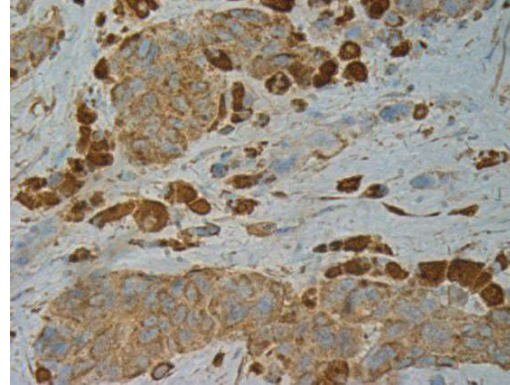
HEK293T cells were transfected with pCDNA3-GFP-B-Raf WT plasmid (left column) or pCDNA3-GFP-B-Raf V600E plasmid (right column), then fixed and stained with anti-B-Raf (V600E) monoclonal antibody (Cat. # 26039).

Immunohistochemistry:



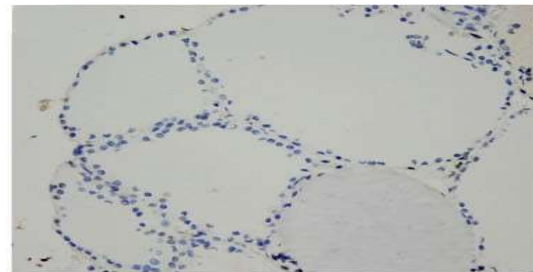
Immunohistochemical analysis of paraffin embedded Thyroid Carcinoma tissue -with anti BRaf(V600E) monoclonal antibody (Cat. # 26039).

Tissue samples were fixed with formaldehyde and blocked with 1% serum for 15 min at 37 °C. Antigen retrieval was by heat mediation in citrate buffer (pH6). Samples were then incubated with primary antibody (1:100) overnight at 4°C. HRP-conjugated Goat anti-mouse IgG (dilution 1:50) was used as secondary antibody.



Immunohistochemical analysis of paraffin-embedded human melanoma tissue with anti-B-Raf (V600E) monoclonal antibody (Cat. # 26039).

Tissue samples were fixed with formaldehyde and blocked with 1% serum for 15 min at 37 °C. Antigen retrieval was by heat mediation in citrate buffer (pH 6). Samples were then incubated with primary antibody (1:100) overnight at 4°C. HRP-conjugated Goat anti-mouse IgG (dilution 1:50) was used as secondary antibody.



Immunohistochemical analysis of paraffin embedded Thyroid Carcinoma tissue with anti BRaf(V600E) monoclonal antibody (Cat. # 26039).

Tissue samples were fixed with paraffin. Samples were then incubated with primary antibody (1:100) overnight at 4°C. HRP- conjugated Goat anti-mouse IgG (dilution 1:50) was used as secondary antibody. Allele specific PCR validated to be Negative for BRAF V600E.

FOR RESEARCH USE ONLY. NOT FOR DIAGNOSTIC APPLICATIONS